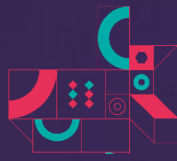




CONGRESS ON REGULATORY ISSUES

Fragrance & Cosmetics



COSMETIC
VALLEY

CŒUR BATTANT
DE L'INDUSTRIE
COSMÉTIQUE
MONDIALE



CHARTRES
MÉTROPOLE

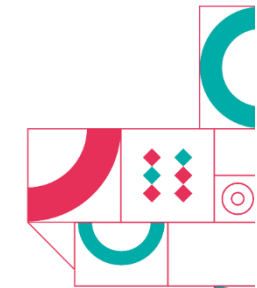
Practical Information

All the elements for the preparation of your participation in
the Congress

- Location & Contacts
- Accommodation
- Access & Shuttles
- Bus Station/Illiade

Wednesday 18 & Thursday 19 November 2026
L'Illiade, Chartres

Location / Accommodation / Contacts



Location of the Congress

Congress on Regulatory Issue Fragrance & Cosmetics
Exhibition Center, L'Illiade
Visitor access number 2

Route Départementale 32
28000 CHARTRES
Tel : +33 (0)2 37 28 29 37

GPS coordinates : FG5M+34 Chartres



The Team

Sandra POITOU, Congress Manager
Tel : +33 (0)1 41 86 49 06 - spoitou@advbe.com

Xavier SICARD, Customers Relation Manager
Tel : +33 (0)1 41 86 41 10 - sicard@advbe.com

Eliana Andria, Congress Project Manager
Tél : +33 (0)1 41 86 49 07 – eandria@advbe.com

Ludivine GRISEL, Logistics Manager
Tel : +33 (0)1 41 86 41 52 - lgrisel@advbe.com

Omar DAHBI, Commercial Manager
Tel : +33 (0)1 41 86 49 37 - odahbi@advbe.com


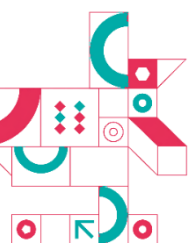
advanced business events

10 rue de la Rochefoucauld – CS50300- 92513 Boulogne Billancourt CEDEX

Tel : +33 (0)1 41 86 41 52

Site Internet : www.congres-parfumscosmetiques.com

Email : parfumscosmetiques@advbe.com



Reception on site – preferably before 8:40 a.m.

When you arrive, go to the reception desk where we will give you from 8am:

- A bag with the conferences monitoring book
 - The pocket and lanyard for your badge
- Remember to print your badge



Accommodation

Revolugo is the official travel agency partner of the 2025 edition of the Perfumes & Cosmetics Regulatory Issues Congress. They offer a wide choice of accommodation at specially negotiated rates!

With our partner, you will be guaranteed that your hotel reservation, your data and personal information will be protected and secure.

[ACCESS TO THE BOOKING PLATFORM](#)

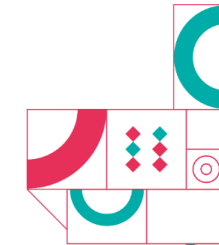
Practical information:

For any questions, our partner will be happy to help you:

Email: reservations@revolugo.com

Tel: +33 (0)1-80-06-62-88 (free of charge – from 9 a.m. to 7 p.m.)

Access to Chartres / Illiade



Train

Line Paris Montparnasse → Chartres – Direct Route= approximately 1 hour
You can find all the train timetables on: <https://www.sncf-connect.com/>

The Exhibition Center is more than 30 minutes away on foot, it is better to take a taxi or the bus



Taxi

Association Chartres Taxi Radio 2000 : +33 (0)2 37 36 00 00
Accueil Taxis Eure & Loir : +33 (0)2 37 22 20 00



By Car

From Paris : A6 Direction Bordeaux – Nantes
then take A10 and A11 toward Chartres – Distance 88 km
- From Orléans : A701, N154 – Distance 76 km
- From Tours : A10, N10 – Distance 139 km



L'Illiade's Parking

Parking is freely accessible and free
Charging stations for electric vehicles are available in the parking lot



Airport Shuttles

For very competitive rates (collective shuttles) between ORLY/ROISSY airports and Chartres, we advise you to go to : <http://www.navetteservices.fr/navette-collective/>

Book your trip at least 10 days in advance. The wait at the airport can be up to an hour and a half.

For help or more information, you can contact Ludivine GRISEL
Tel : +33 (0)1 41 86 41 52 - lgrisel@advbe.com



Plane

AIR France Discount :
Attractive discounts, up to -10%, on a wide range of public fares on all AIR FRANCE, KLM and their code-shared flights worldwide

Event : **Congrès Parfums & Cosmétiques 2026**

ID Code: **60835AF**

Travel Valid Period: **November 11, 2025 to November 26, 2026**

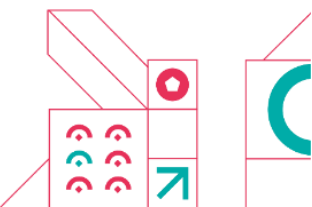
Place of the event: **Chartres - France**

Please visit the event website or access directly through
<https://www.globalmeetings.airfranceklm.com/Search/promoDefault.aspx?vendor=AFR&promocode=60835AF>

Ticket booking on the Air France or KLM **websites by applying the event's unique identification code during the payment process.**

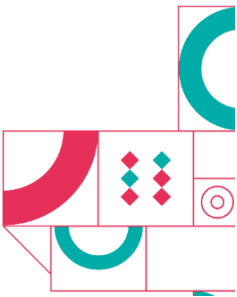
If you book via the AIR FRANCE & KLM Global Meetings website, a supporting document will be attached to your e-ticket. If you prefer to make your booking and purchase through an AIR FRANCE KLM sales office or an authorized travel agency, you must keep this document to justify the application of the preferential fares.

Please make sure you have one of these supporting documents with you, depending on your booking method, as it may be requested at any time during your trip.



Shuttles – Registration required

These shuttles are **free** but require **pre-registration** on your online file or by email : lgrisel@advbe.com



Shuttles Paris/Chartres/Paris

Wednesday 18 of November

→ Departure from Paris - **Place Charles de Gaulle Etoile** – at the corner of avenue de Friedland (served by RER – Subway - Bus) **at 7 a.m.**
Arrival at L'Illiade between 8am et 8:30 a.m.

→ Departure from L'Illiade at **6:50 p.m.**
Arrival in Paris (Place Charles de Gaulle Etoile) between 8:00pm and 8:30pm

Thursday 19 of November

→ Departure from Paris- **Place Charles de Gaulle Etoile** – at the corner of avenue de Friedland (served by RER – Subway - Bus) **at 7 a.m.**
Arrival at L'Illiade between 8 a.m. & 8:30 a.m.

→ Departure from L'Illiade at **5:45 p.m.**
Arrival in Paris (Place Charles de Gaulle Etoile) between 7 p.m. and 7:30 p.m.

If the driver goes via the A6 – he will make a first drop-off at Porte d'Orléans
If the driver goes via the N118 – he will make a first drop-off at Boulogne Billancourt

Wednesday 18 & Thursday 19 – Hotel Shuttles → L'Illiade – morning

City center Hotels (Bus 1)



City Center Shuttles

City center hotels → Illiade
Single meeting point :
Bus parking area
11 Rue Charles Brune
28000 Chartres

Departure time on November 18 & 19 →
8 :10 a.m

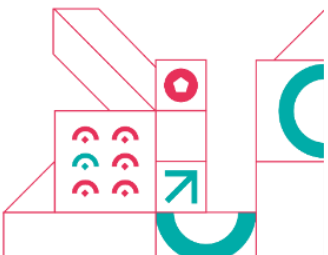
Please arrive 5–10 minutes in advance.

Outskirts Hotels (Bus 2)

7.45 a.m.	Departure from B&B HOTEL Chartres Centre (Place Drouaise)
8 a.m.	Departure from Mercure Hotel
8.10 a.m.	Departure from B&B Chartres Océane
8.20 a.m.	Departure from Novotel Hotel
8.30 a.m.	Departure from Campanile Restaurant Hotel

Wednesday the 18th in the evening: **Return to hotels**

Two shuttles will be available in front of the Illiade hall:
Departure at 6:55 p.m.



Shuttles organized by the City Station/Congress


 Filibus ticket price : 1,5€

 The City of Chartres has organized buses for :
your arrival on Wednesday, Nov. 18 at the Congress-Illiade and for the return on Thursday, Nov. 19 to the station

 Check the direction displayed on the bus

Wednesday November 18

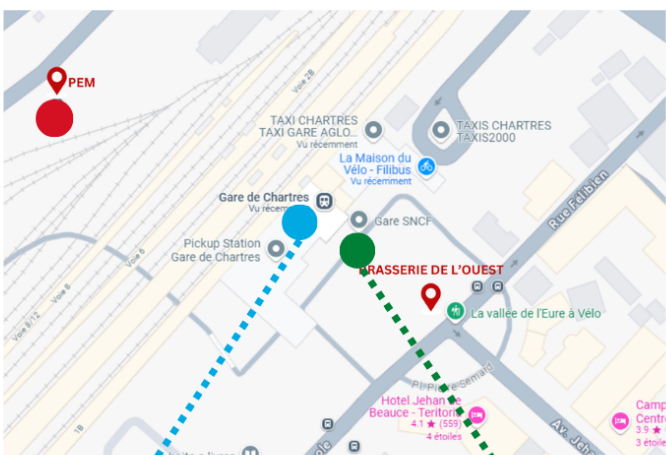
  PARC DES EXPO L'ILLIADÉ

SNCF trains arriving at Chartres at :		
	07:35	08:24
Bus Arrival Time		Illiade
Stop : Gare-Nicole	07:53	08:43
Arrival time at the Congress:		
Stop : Illiade - Congrès	08:13	09:03

Thursday November 19

  CHARTRES Pôle d'Échange

Bus stop just outside the Exhibition Centre				
Stop : Illiade - Congrès	15:00	16:00	17:00	18:00
Arrival				
Stop : Gare-Nicole	15:20	16:25	17:25	18:25



Chartres Station

Bus Stop : Gare-Nicole

NB : No bus on Wednesday 18 Afternoon and Thursday 19 Morning

If necessary, please contact
Eliana Andria : eandria@advbe.com / +33 (0)1 41 86 49 07